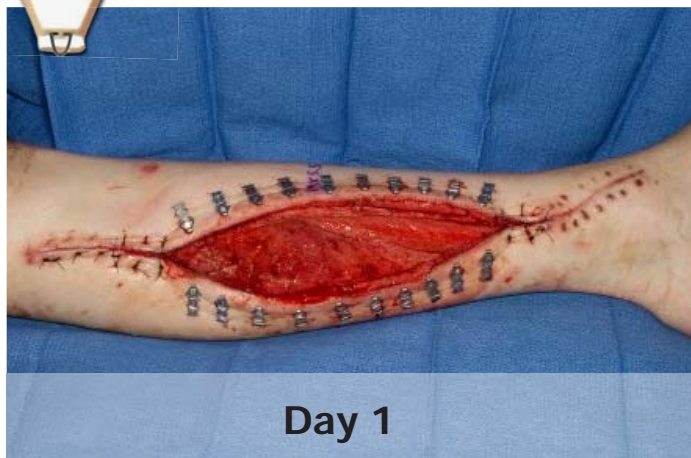


## Legs - Fasciotomy Bilateral



Day 1



post-application



Day 6



Two Week Follow-up

**DERMA**Close<sup>®</sup> RC  
Continuous External Tissue Expander

**WOUND**CARE<sup>™</sup>  
TECHNOLOGIES  
"Expanding Your Clinical Options"

Expanding your clinical options

[www.dermaclose.com](http://www.dermaclose.com) • (800)896-0436