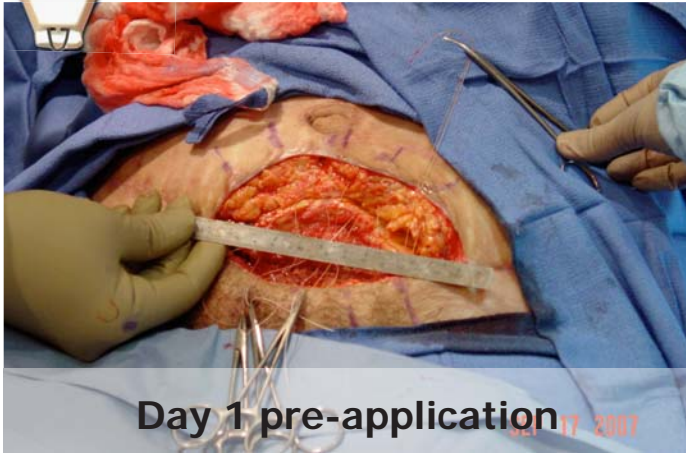




## Abdomen - Dehiscence



This abdominoplasty complication was debrided and prepared for DermaClose application.



Following debridement a plane was created and dissolvable sutures were placed in the fat layer to facilitate tissue migration.



The DermaClose was placed and immediately mobilized the wound margins.



It was decided to place interrupted sutures intra-operatively as the margin continued to approximate.

**DERMA**Close™ RC  
Continuous External Tissue Expander

**WOUND**CARE™  
TECHNOLOGIES  
"Expanding Your Clinical Options"

Expanding your clinical options

www.dermaclose.com • (800)896-0436



## Abdomen - Dehiscence - cont.



**At suture removal**

At 14 days the patient returned for suture removal.